

CONSTRUCTION UPDATE

SUMMARY

This issue provides an update on University District construction progress since the last update in July, as well as information about any impacts on traffic, connectivity and the site experience.

KEY IMPACTS TO BE AWARE OF:

- New parking options for dog park visits.
- Temporary pedestrian pathway changes along University Ave (Main Street).
- BRT construction on McLaurin St.
- Increased traffic on 39th Street & University Ave for grading south of family housing.



WHAT'S HAPPENING THIS MONTH

COMPLETION OF THE NORTH POND & PARK

With the popularity of the urban dog park, the community has seen an increase in visits to the north pond and park area. While substantially complete, the remainder of the park and its pedestrian connections will be open at the end of the month. Once complete the northern open space system will feature new connections to the internal road network meaning enhanced pedestrian connectivity.

PARKING FOR THE DOG PARK

Visitors to the urban dog park can park for free at the Discovery Centre. If the Centre is open, please stop in and say hi. The walk is approximately 500 metres north of the Centre (see map to the left).

NEIGHBOURHOOD PARK CONSTRUCTION ADJACENT TO PHASE 1 (THE IVY & NOBLE)

This neighbourhood park is currently under construction is starting to take shape, with the concrete bench walls and seating being poured, and the playground coming in September. Currently fenced for safety reasons, the park will open by the end of the construction season and become a main amenity space for nearby residents.

BLOCK 22 (GROCERY STORE) CONSTRUCTION

Continued construction on this significant development site along University Avenue will require intermittent lane closures. This may result in impacts to the flow of traffic and pedestrian connectivity. Please obey construction signage as posted.

GRADING ALONG MAIN STREET (SOUTH OF GRADUATE STUDENT HOUSING)

Crews will begin rough grading the land just south of Student Family Housing in preparation for next year. This will mean an increase in construction traffic travelling in the area. Flaggers will be onsite to assist with traffic flow.



West Campus
DEVELOPMENT
TRUST

The Trust is a different kind of real estate development company. We will achieve the community vision through a strong commitment to our stakeholders and through our guiding principles of collaboration, innovation, future-focus, and leadership in community building.

MAPLE SENIORS HOUSING GROUND BREAKING

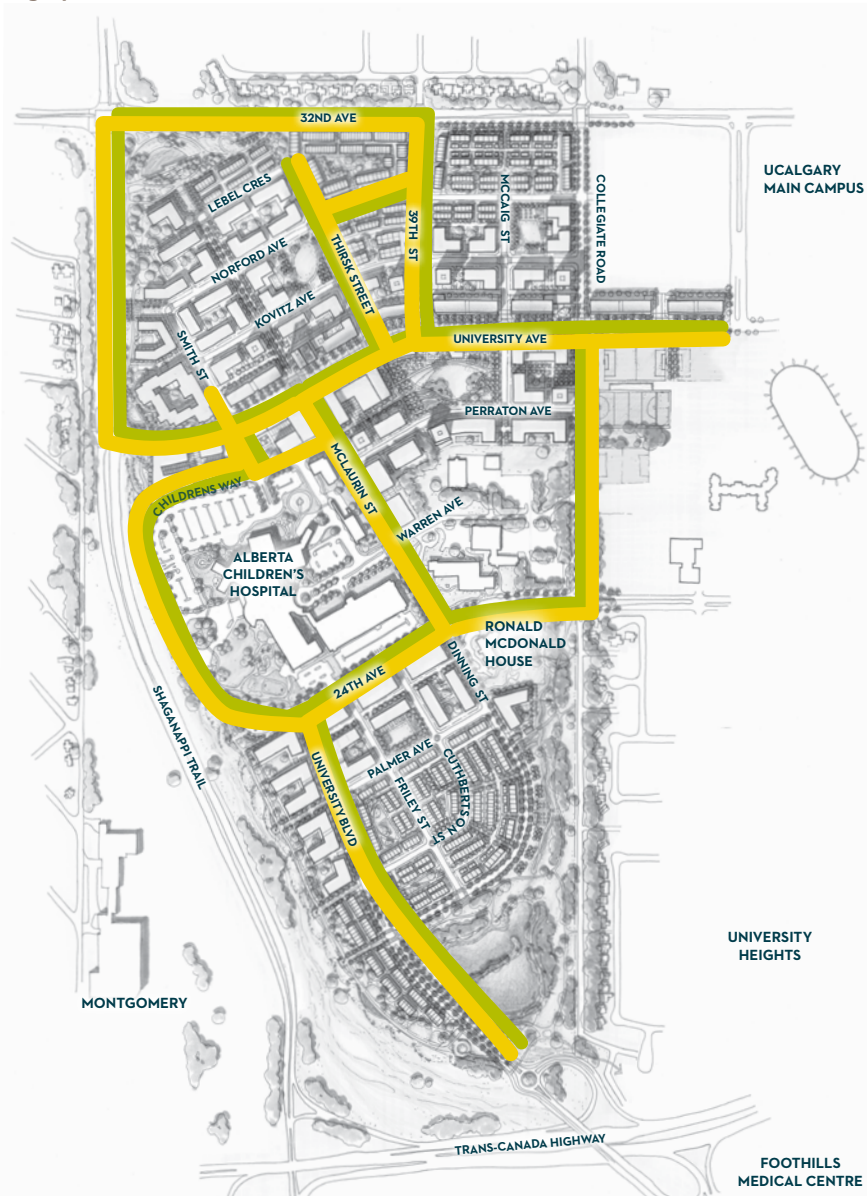
Truman's seniors independent living project, visible from Shaganappi Trail, broke ground this month. This project is being offered in conjunction with The Brenda Strafford Foundation's Cambridge Manor Assisted Living Facility (both projects are connected by a Plus 30 walkway). We do not anticipate any impacts to the surrounding community. For details about the project visit www.myuniversitydistrict.ca.

SMITH STREET SIDEWALK COMPLETION

With paving of the sidewalk along Smith St this month, pedestrians will have another access route to the north pond and park (in addition to the pathway along Shaganappi Trail).

ADDITION OF A BUS RAPID TRANSIT STOP - MCLAURIN ST

The City of Calgary will soon begin its construction of the BRT stops on McLaurin St. Stops will provide an enhanced transit connection between University District and the rest of the city's transit network. Please anticipate various lane closures around Oki Drive and the Children's Hospital during this time. The City anticipates completion this fall. Please refer to the calgarytransit.com website for more details.



- VEHICLE & BIKE ROUTES
- PEDESTRIAN ROUTE



NEW RESIDENTS' SECTION

Welcome to the neighbourhood! Please refer to your Residents' Welcome Letter from the Trust for specific information about your move-in process and the details to help you navigate in the community as we grow. You can sign up for a residents' e-newsletter if you wish: stop by the Discovery Centre or call us to add your name to the list.

HOW CAN I STAY INFORMED?

For quick response to questions or concerns 24 hours per day, please call the Trust Hotline at **1.855.400.5556**.

You can also visit www.wcdt.ca/construction to see ongoing or archived Construction News Bulletins.